

**RECREATION MASTER PLAN STEERING COMMITTEE
MEETING MINUTES
FEBRUARY 13, 2019, 7:00 PM
WESTON COMMUNITY CENTER
20 ALPHABET LN., WESTON, MA 02493**

Members Present: Trevor MacDonald, Kristin Barbieri, Michael McGrath, Ben Polimer, Christopher Fitzgerald, Charlie Hipwood, Mark Ferris, Michelle Callanan

Members absent: Peter Foley, John Power, Alex Cobb, Melissa Crocker

Guests: Miike Moonan , Cassidy Chroust, Tim Sheehan – all representing Weston & Sampson, Inc.

The meeting commenced at 7:05 AM

Public Comments – Peter Hill made the comment that he would like to see Lime e-bikes to be considered for the Recreation Master Plan.

Recreation Master Plan – Public Information Gathering

A brief presentation on the progress thus far of the Recreation Master Planning process was presented by consultants at Weston & Sampson, led by Mike Moonan and Cassidy Chroust (see attachment 1).

Eight members of the public were present and were given the opportunity to ask questions or give suggestions for further consideration as the plan progresses. Suggestions included:

- Basketball space indoors
 - Crew – indoor facility
 - Volleyball – increasing in popularity
 - Soccer – indoor space, specifically for Futsol
 - Multi-use facility
 - Scheduling with delayed start/end time to school day
 - Conflicts with parking
 - Baseball – additional 50-70 ft. field space
 - Softball fields could use upgrading
 - Field scheduling app
 - Pickleball – becoming popular
 - Lacrosse field
 - Drainage issues at some field sites
-
- Planning for future vs. what we need right now – shifts in sports? Demographics? Class sizes?

- Data received from youth and school sports and census
- Wellesly complex – anything similar being considered? *W&S* – location important, especially with distance to like facilities in bordering town
- Sandy from Sustainable Weston Action group got audit money to chart gas leaks around town and working with us to show where the gas will gas leak impacts will be and open space needed as well.
- COA – did not hear much about facilities for late in life – walking paths for elderly?
 - *W&S* – take a look at that for all sites and look at how we can put in a perimeter walking paths with possible fitness or playground spots, including ADA access.
- COA – Pickleball as well
- Suggestion – Burchard Park – area around College pond that could be made accessible, also Linwood Cemetery could be made accessible (not attractive); Norumbega, aquaduct trail, there is potential all over the place – wheelchairs, strollers, kids on trikes, etc.
- Changing facilities at the outdoor pool should be upgraded – *on list wasn't mentioned but buildings are pretty tired*
- Eric R. – Pool heated, something you have experience with? i.e. is there a size recommendation?
 - *Need to look at user groups and decide how this happens? Can design pools but does it work for the town? Multiple pools – family plus lap; temperature is important for seniors (don't like below 78 degrees); options are out there for head exchangers and/or renewable energies*
- Eric R. – Winter – should we have treadmills indoors, covered tennis courts, have you seen towns do that?
 - *Saw communities build indoor/domed facilities with turf field and/or tennis courts, every community requests an indoor facility because there are not a lot of places in New England to recreate in the winter – i.e. indoor running track with fields; aquatics – lap pools typically should be indoor b/c of costs vs. return. Family pools – demand shows should be outdoor facility.*
- Is there any talk on case estates?
 - *Fitzgerald – Not officially; there is a trail – Legacy Trail – under planning, will include Weston 300 pavers and benches – aside from that nothing has been spoken of, partially b/c of current septic restrictions; soil remediation, more work needs to be done by the town at large before looking into more detail.*

The meeting adjourned at 7:57 PM.

Attachment 1: Recreation Master Plan presentation from Weston & Sampson

WESTON RECREATION MASTER PLAN



PUBLIC MEETING #1
 February 13, 2019
 Mike Noonan, RLA
 Cass Chroust, RLA



WESTON RECREATION MASTER PLAN PRESENTATION OUTLINE



1. Introduction: Who We Are
2. Basic Project Goals
3. Primary Tasks
4. Tentative Project Timeline
5. Open Discussion



WESTON RECREATION MASTER PLAN INTRODUCTION: WHO WE ARE



- Landscape Architects
 - Sports + Recreation Facilities, Parks, and Playgrounds
- Aquatic Designers
- Engineers
- Architects
- Environmental Scientists



WESTON RECREATION MASTER PLAN BASIC PROJECT GOALS



- Complete an **inventory** and **analysis** of specific recreation facilities
- Complete a **public outreach** and **needs assessment** process to identify and prioritize community needs
- Develop a **strategic plan** for improving existing facilities and/or constructing new facilities to meet community needs, safety, accessibility, and gender equity
- Outline a potential **implementation process** to include funding and phasing strategies



WESTON RECREATION MASTER PLAN PRIMARY TASKS



NEEDS ASSESSMENT

- Facility Inspections + Observations: Fields, Gymnasiums, and Pools
- User Survey + Public Input Meetings + Stakeholder Meetings
- Field Usage Matrix: Current Capacity versus Total Usage
- Geographic Distribution
- Trends + Future Needs



WESTON RECREATION MASTER PLAN PRIMARY TASKS

FIELD PROPERTIES

- Alphabet Field
- Brook School Field
- Burchard Park at College Pond
- Burt Field
- Cherry Brook Park
- Czarnowski Field
- Ferrell Field
- Malone Field
- Meadowbrook School
- Rivers School
- Weston High School Middle School Complex
- Field Elementary School
- Woodland School

GYMNASIUM PROPERTIES

- Country School
- Weston High School
- Weston Middle School
- Field Elementary School
- Woodland School

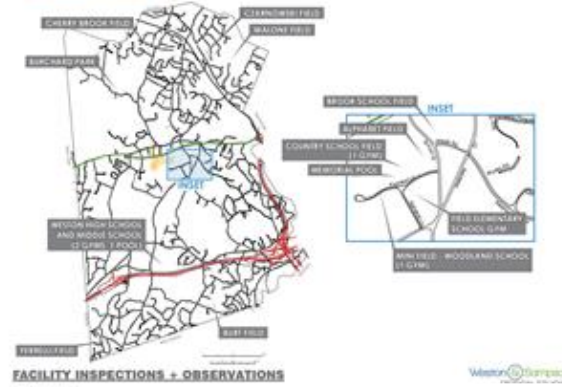
POOL PROPERTIES

- Memorial Pool
- Middle School Pool

FACILITY INSPECTIONS + OBSERVATIONS



WESTON RECREATION MASTER PLAN
PRIMARY TASKS



WESTON RECREATION MASTER PLAN
PRIMARY TASKS - FIELDS



WESTON RECREATION MASTER PLAN
PRIMARY TASKS - FIELDS



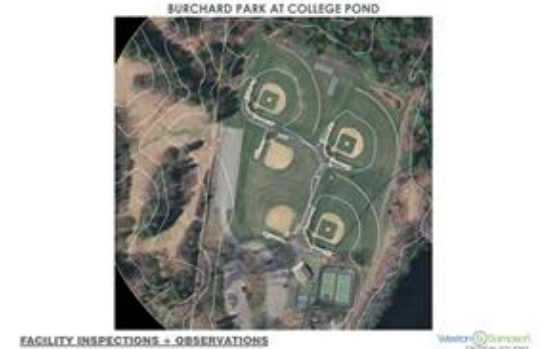
WESTON RECREATION MASTER PLAN
PRIMARY TASKS - FIELDS



WESTON RECREATION MASTER PLAN
PRIMARY TASKS - FIELDS



WESTON RECREATION MASTER PLAN
PRIMARY TASKS - FIELDS



WESTON RECREATION MASTER PLAN
PRIMARY TASKS - FIELDS

BURCHARD PARK AT COLLEGE POND



FACILITY INSPECTIONS + OBSERVATIONS



WESTON RECREATION MASTER PLAN
PRIMARY TASKS - FIELDS

BURT FIELD



FACILITY INSPECTIONS + OBSERVATIONS



WESTON RECREATION MASTER PLAN
PRIMARY TASKS - FIELDS

BURT FIELD



FACILITY INSPECTIONS + OBSERVATIONS



WESTON RECREATION MASTER PLAN
PRIMARY TASKS - FIELDS

CHERRY BROOK PARK



FACILITY INSPECTIONS + OBSERVATIONS



WESTON RECREATION MASTER PLAN
PRIMARY TASKS - FIELDS

CHERRY BROOK PARK



FACILITY INSPECTIONS + OBSERVATIONS



WESTON RECREATION MASTER PLAN
PRIMARY TASKS - FIELDS

CZARNOWSKI FIELD



FACILITY INSPECTIONS + OBSERVATIONS



WESTON RECREATION MASTER PLAN
PRIMARY TASKS - FIELDS

CZARNOWSKI FIELD



FACILITY INSPECTIONS + OBSERVATIONS



WESTON RECREATION MASTER PLAN
PRIMARY TASKS - FIELDS

FERRELLI FIELD



FACILITY INSPECTIONS + OBSERVATIONS



WESTON RECREATION MASTER PLAN
PRIMARY TASKS - FIELDS

FERRELLI FIELD



FACILITY INSPECTIONS + OBSERVATIONS



WESTON RECREATION MASTER PLAN
PRIMARY TASKS - FIELDS

MALONE FIELD



FACILITY INSPECTIONS + OBSERVATIONS



WESTON RECREATION MASTER PLAN
PRIMARY TASKS - FIELDS

MALONE FIELD



FACILITY INSPECTIONS + OBSERVATIONS



WESTON RECREATION MASTER PLAN
PRIMARY TASKS - FIELDS

WESTON HIGH SCHOOL MIDDLE SCHOOL COMPLEX



FACILITY INSPECTIONS + OBSERVATIONS



WESTON RECREATION MASTER PLAN
PRIMARY TASKS - FIELDS

WESTON HIGH SCHOOL MIDDLE SCHOOL COMPLEX



FACILITY INSPECTIONS + OBSERVATIONS



WESTON RECREATION MASTER PLAN
PRIMARY TASKS - FIELDS

WESTON HIGH SCHOOL MIDDLE SCHOOL COMPLEX



FACILITY INSPECTIONS + OBSERVATIONS



WESTON RECREATION MASTER PLAN
PRIMARY TASKS - FIELDS

WESTON HIGH SCHOOL MIDDLE SCHOOL COMPLEX



FACILITY INSPECTIONS + OBSERVATIONS



WESTON RECREATION MASTER PLAN
PRIMARY TASKS - FIELDS

FIELD ELEMENTARY SCHOOL



FACILITY INSPECTIONS + OBSERVATIONS



WESTON RECREATION MASTER PLAN
PRIMARY TASKS - FIELDS

WOODLAND ELEMENTARY SCHOOL



FACILITY INSPECTIONS + OBSERVATIONS



WESTON RECREATION MASTER PLAN
PRIMARY TASKS - FIELDS

MINI FIELD - WOODLAND ELEMENTARY SCHOOL



FACILITY INSPECTIONS + OBSERVATIONS



WESTON RECREATION MASTER PLAN

PRIMARY TASKS - GYMNASIUMS

COUNTRY ELEMENTARY SCHOOL GYM



FACILITY INSPECTIONS + OBSERVATIONS



WESTON RECREATION MASTER PLAN

PRIMARY TASKS - GYMNASIUMS

FIELD ELEMENTARY SCHOOL GYM



FACILITY INSPECTIONS + OBSERVATIONS



WESTON RECREATION MASTER PLAN

PRIMARY TASKS - GYMNASIUMS

HIGH SCHOOL GYM



FACILITY INSPECTIONS + OBSERVATIONS



WESTON RECREATION MASTER PLAN

PRIMARY TASKS - GYMNASIUMS

MIDDLE SCHOOL GYM



FACILITY INSPECTIONS + OBSERVATIONS



WESTON RECREATION MASTER PLAN

PRIMARY TASKS - GYMNASIUMS

WOODLAND ELEMENTARY SCHOOL GYM



FACILITY INSPECTIONS + OBSERVATIONS



WESTON RECREATION MASTER PLAN

PRIMARY TASKS - POOLS

MEMORIAL POOL



FACILITY INSPECTIONS + OBSERVATIONS



WESTON RECREATION MASTER PLAN
PRIMARY TASKS - POOLS



FACILITY INSPECTIONS + OBSERVATIONS



WESTON RECREATION MASTER PLAN
PRIMARY TASKS

AVAILABILITY TO BE DETERMINED
PUBLIC INPUT SURVEY
HELP WESTON PLAN THE FUTURE OF ITS
RECREATION FACILITIES!

FOLLOW THIS LINK:
<https://www.surveymonkey.com/r/westonrecreation>

USER SURVEY + PUBLIC INPUT MEETINGS + STAKEHOLDER MEETINGS



WESTON RECREATION MASTER PLAN
PRIMARY TASKS



FIELD USAGE MATRIX: CURRENT CAPACITY VERSUS TOTAL USAGE

- Work with town staff and stakeholder groups to obtain all usage data
- Identify programs using the field
- Total hours of use per season per team
- Total hours per field per season versus recommended hours of use for turf viability
- 250 to 550 hours per year, depending on performance level of the field



WESTON RECREATION MASTER PLAN
PRIMARY TASKS



STRATEGIC PLAN FOR IMPROVEMENTS

- New, redeveloped, or reconfigured fields
- New or renovated ancillary facilities
- New or adjusted programming offerings
- Site by site improvement strategies
- Property expansions and new property acquisitions
- New or replacement synthetic turf field footprints
- Capital and operational cost implications
- Phasing / funding and implementation strategies



WESTON RECREATION MASTER PLAN
TENTATIVE PROJECT TIMELINE - DRAFT

Task or Milestone	Date
Project Kick-off	November 29, 2018
Facility Site Visits	December/January 2019
Facility Inventory + Existing Conditions Analysis	January / February 2019
Review of Existing Information / Fields Use Matrix	February 2019
Public Meeting #1	February 13, 2019
Make Online Survey Available	February 14, 2019
Online Survey Closes	March 7, 2019
Facility Needs Assessment	March 14, 2019
Draft of Recommended Site Improvements	March 21, 2019
Public Meeting #2	March 28, 2019
Finalize Recommended Site Improvements	April 11, 2019
Draft Funding / Action / Implementation Plan	April 18, 2019
Master Plan Committee Meeting	April 25, 2019
Draft Master Plan	May 30, 2019
Final Master Plan	June 14, 2019



WESTON RECREATION MASTER PLAN
OPEN DISCUSSION

