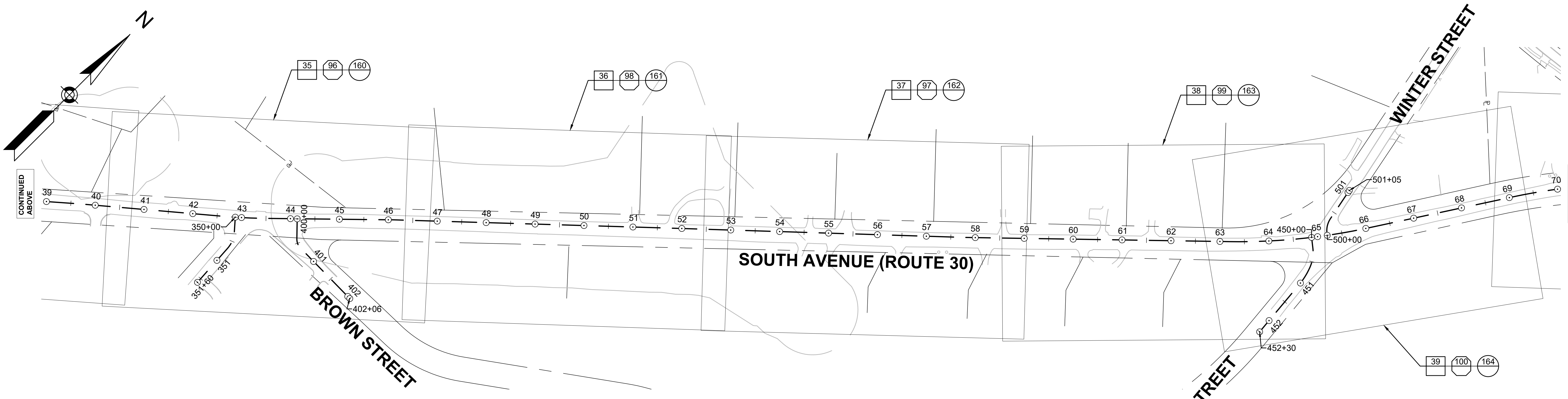
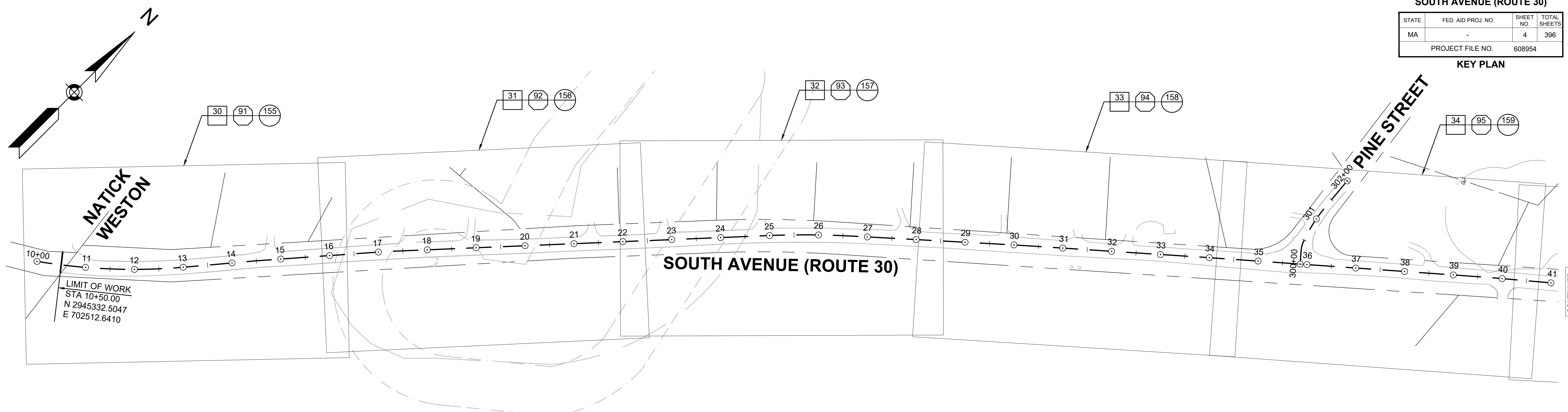


WESTON
SOUTH AVENUE (ROUTE 30)

STATE	FED. AID PROJ. NO.	SHEET NO.	TOTAL SHEETS
MA	-	4	396
PROJECT FILE NO. 608954			

KEY PLAN



LEGEND

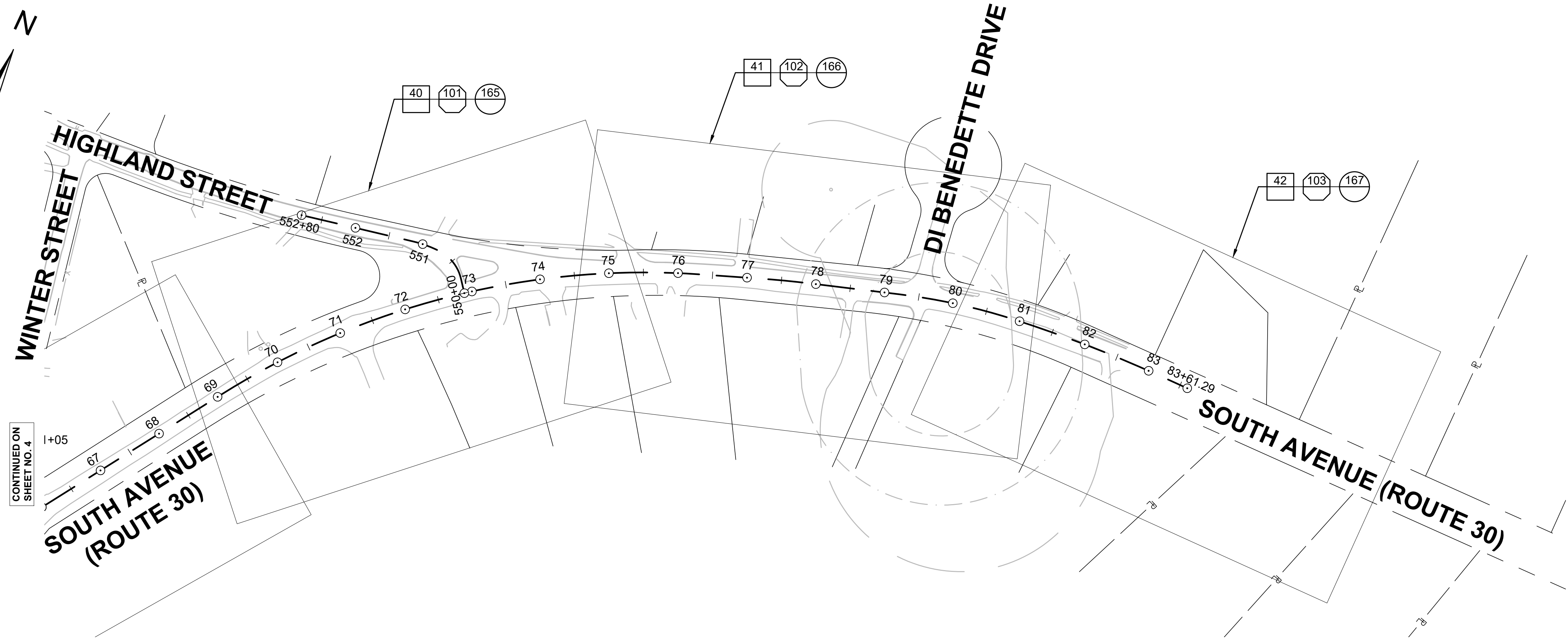
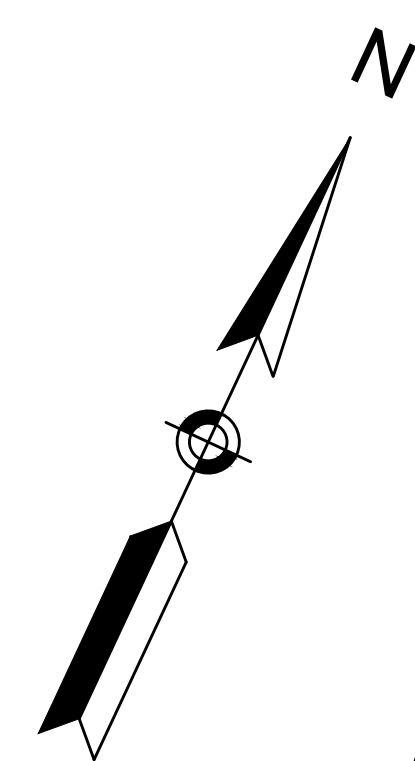
CONSTRUCTION PLANS	BORING LOCATIONS
TRAFFIC SIGN & PAVEMENT MARKING PLANS	TEST PIT LOCATIONS
TRAFFIC SIGNAL PLANS	
UTILITY PLANS	



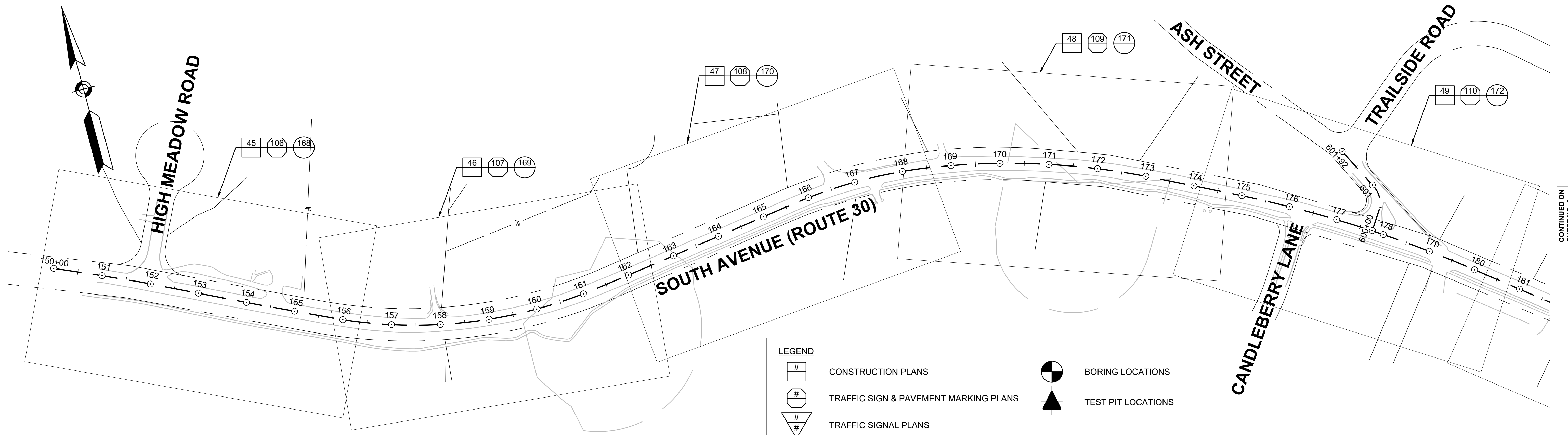
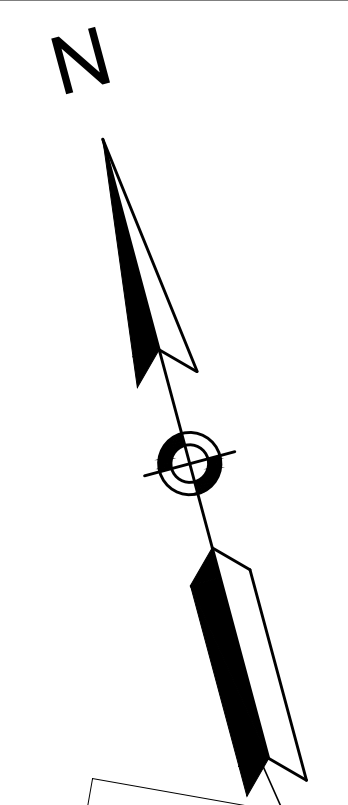
WESTON
SOUTH AVENUE (ROUTE 30)

STATE	FED. AID PROJ. NO.	SHEET NO.	TOTAL SHEETS
MA	-	5	396
PROJECT FILE NO. 608954			

KEY PLAN



CONTINUED ON
SHEET NO. 4



CONTINUED ON
SHEET NO. 6

LEGEND

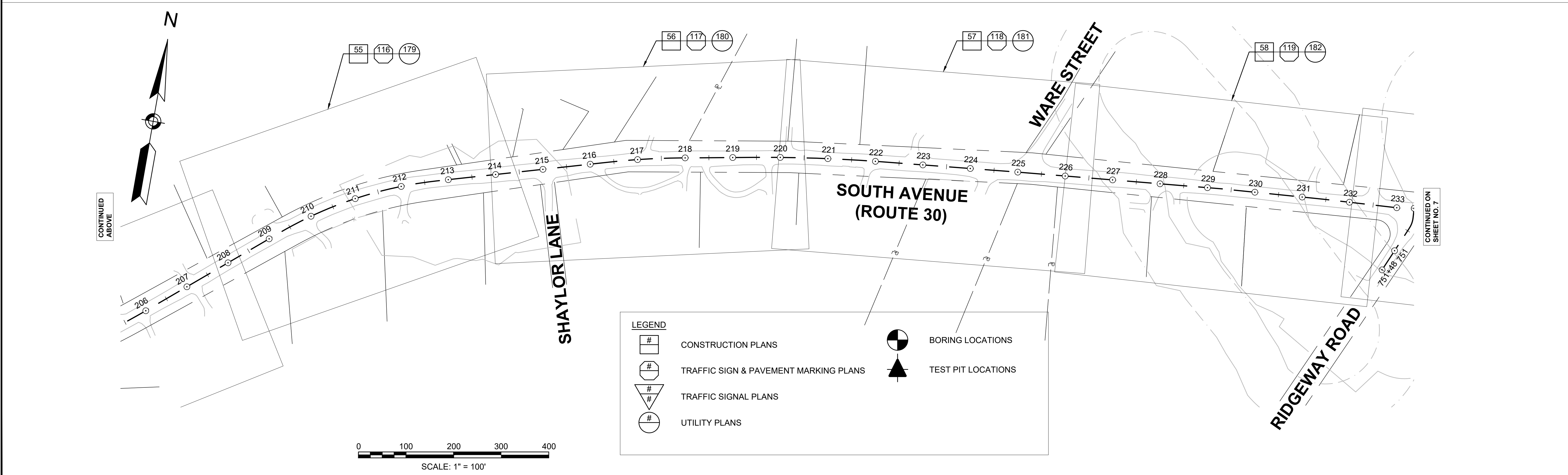
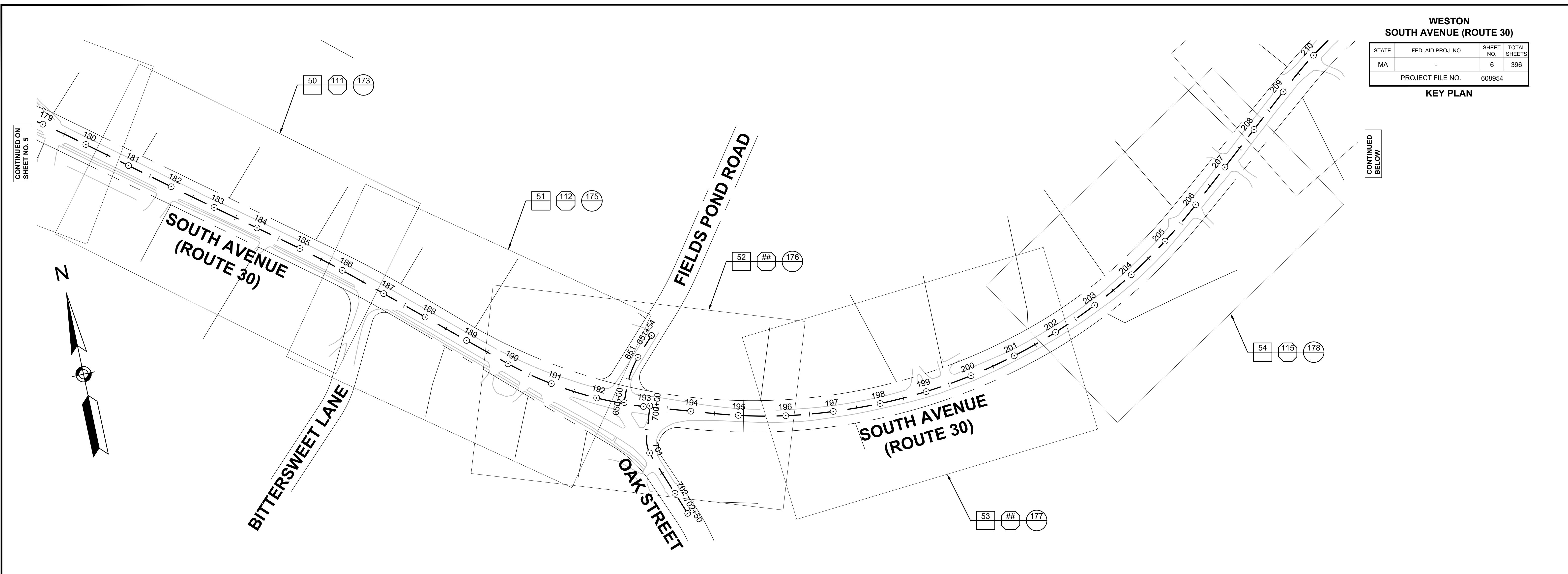
	CONSTRUCTION PLANS		BORING LOCATIONS
	TRAFFIC SIGN & PAVEMENT MARKING PLANS		TEST PIT LOCATIONS
	TRAFFIC SIGNAL PLANS		
	UTILITY PLANS		



WESTON
SOUTH AVENUE (ROUTE 30)

STATE	FED. AID PROJ. NO.	SHEET NO.	TOTAL SHEETS
MA	-	6	396
PROJECT FILE NO.		608954	

KEY PLAN



LEGEND

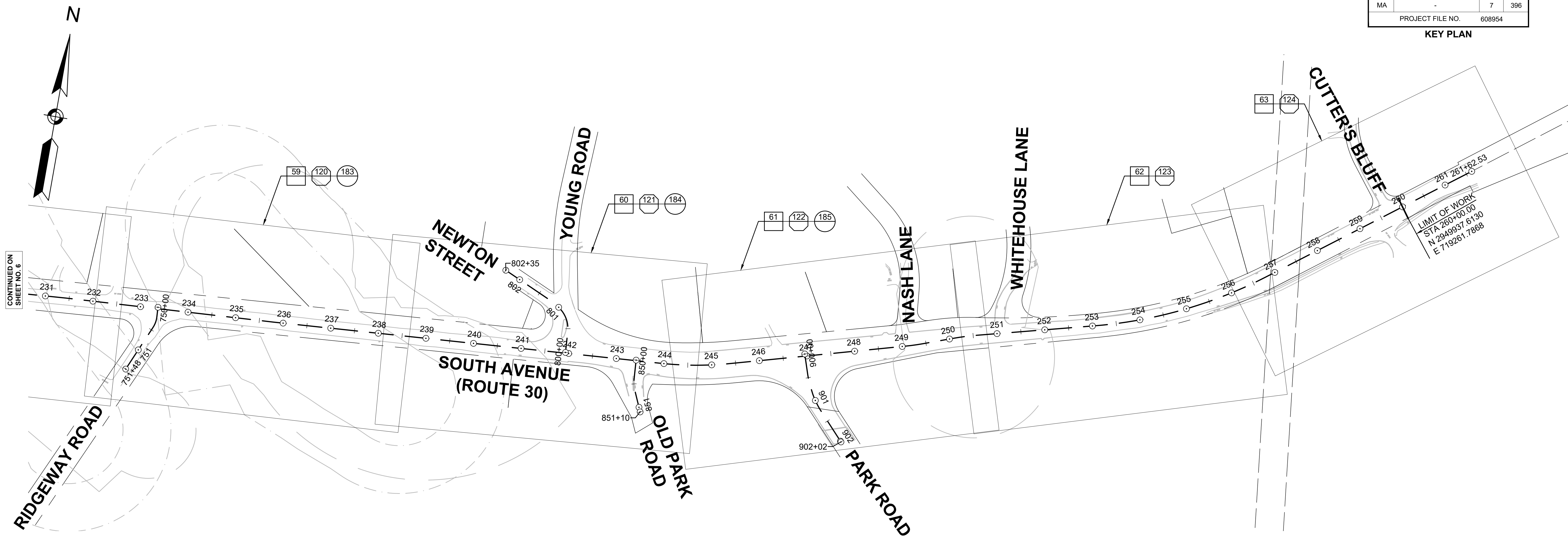
	CONSTRUCTION PLANS		BORING LOCATIONS
	TRAFFIC SIGN & PAVEMENT MARKING PLANS		TEST PIT LOCATIONS
	TRAFFIC SIGNAL PLANS		
	UTILITY PLANS		



**WESTON
SOUTH AVENUE (ROUTE 30)**

STATE	FED. AID PROJ. NO.	SHEET NO.	TOTAL SHEETS
MA	-	7	396
PROJECT FILE NO.		608954	

KEY PLAN



CONTINUED ON
SHEET NO. 6

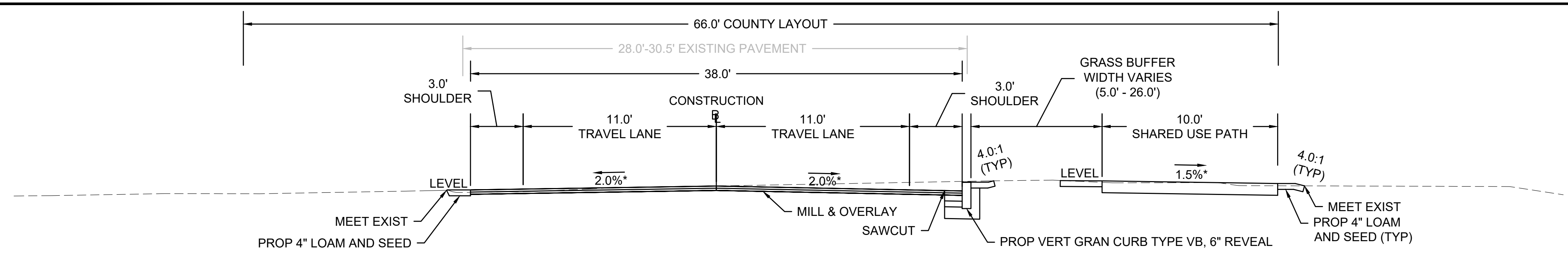
LIMIT OF WORK
STA 260+00.00
N 2949937.6130
E 719261.7868



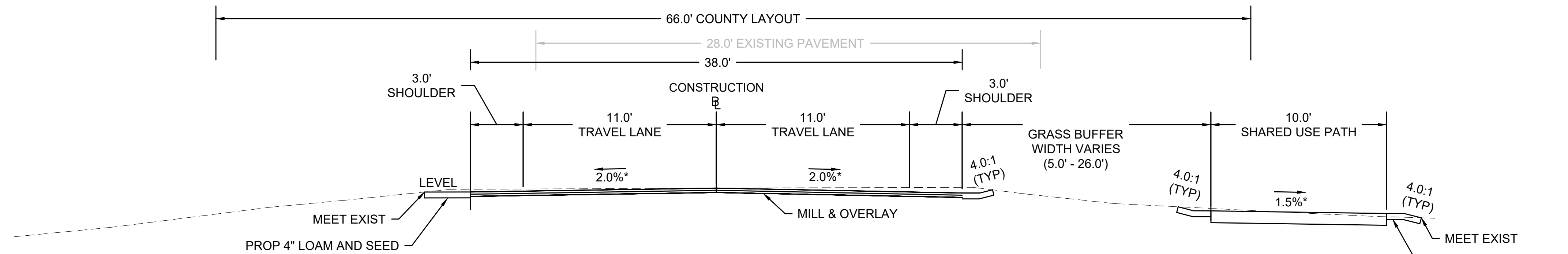
LEGEND

	CONSTRUCTION PLANS		BORING LOCATIONS
	TRAFFIC SIGN & PAVEMENT MARKING PLANS		TEST PIT LOCATIONS
	TRAFFIC SIGNAL PLANS		
	UTILITY PLANS		

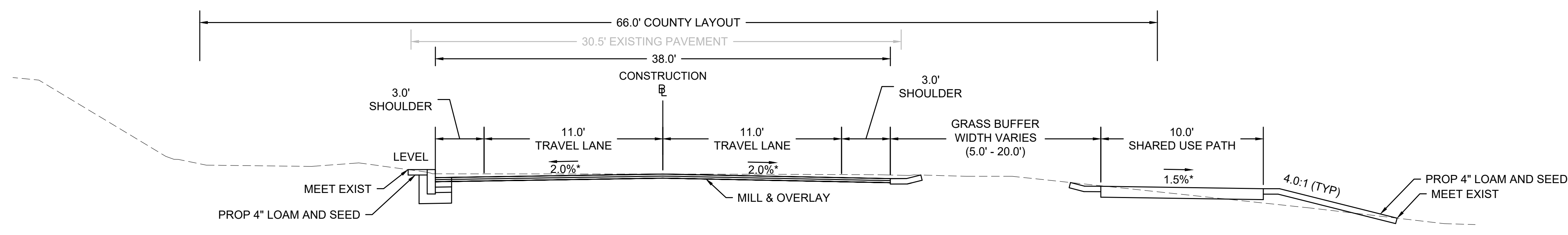
WESTON SOUTH AVENUE (ROUTE 30)			
STATE	FED. AID PROJ. NO.	SHEET NO.	TOTAL SHEETS
MA	-	8	396
PROJECT FILE NO. 608954			
TYPICAL SECTIONS			



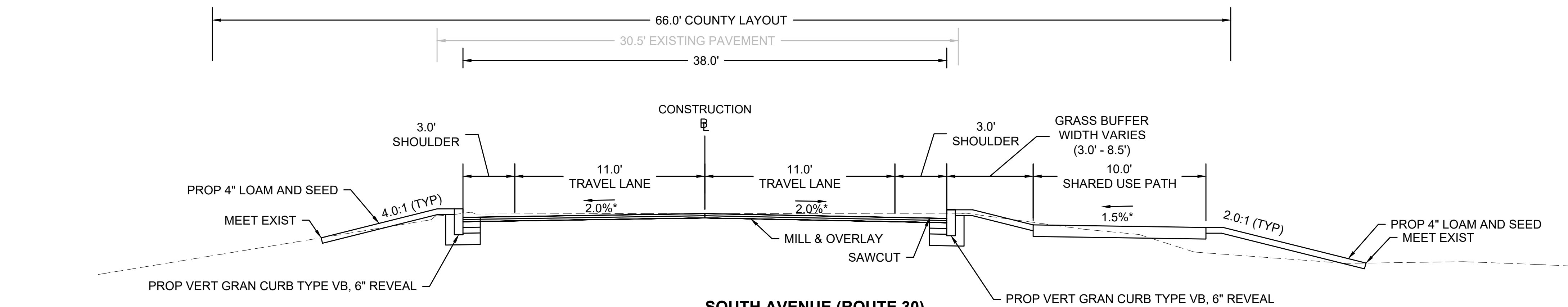
SOUTH AVENUE (ROUTE 30)
 STA 16+47 TO STA 18+58
 STA 40+34 TO STA 65+62
 NOT TO SCALE



SOUTH AVENUE (ROUTE 30)
 STA 14+52 TO STA 16+47
 STA 22+60 TO 40+34
 NOT TO SCALE



SOUTH AVENUE (ROUTE 30)
 STA 11+83 TO STA 14+53
 STA 19+13 TO STA 21+03
 NOT TO SCALE

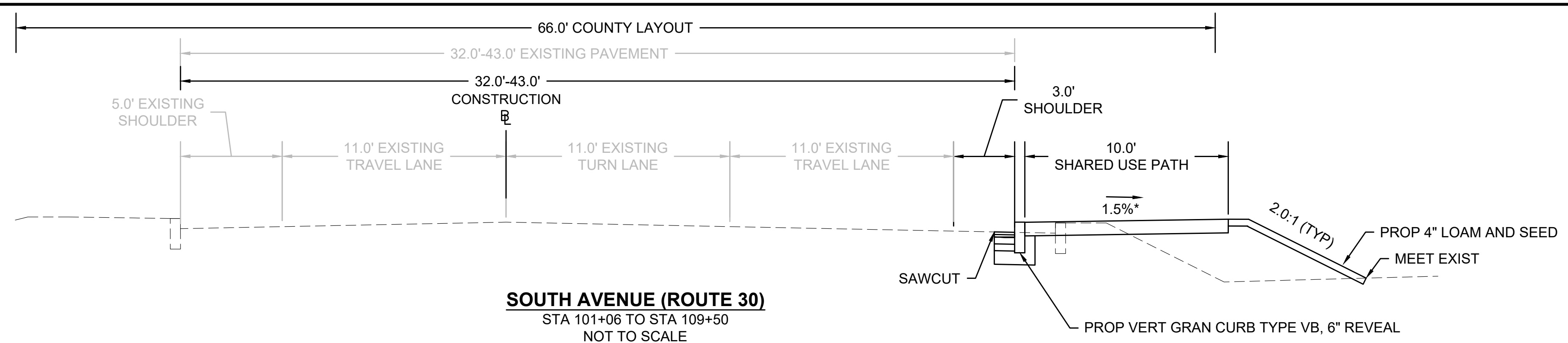


SOUTH AVENUE (ROUTE 30)
 STA 11+23 TO STA 11+83
 STA 21+03 TO STA 22+60
 NOT TO SCALE

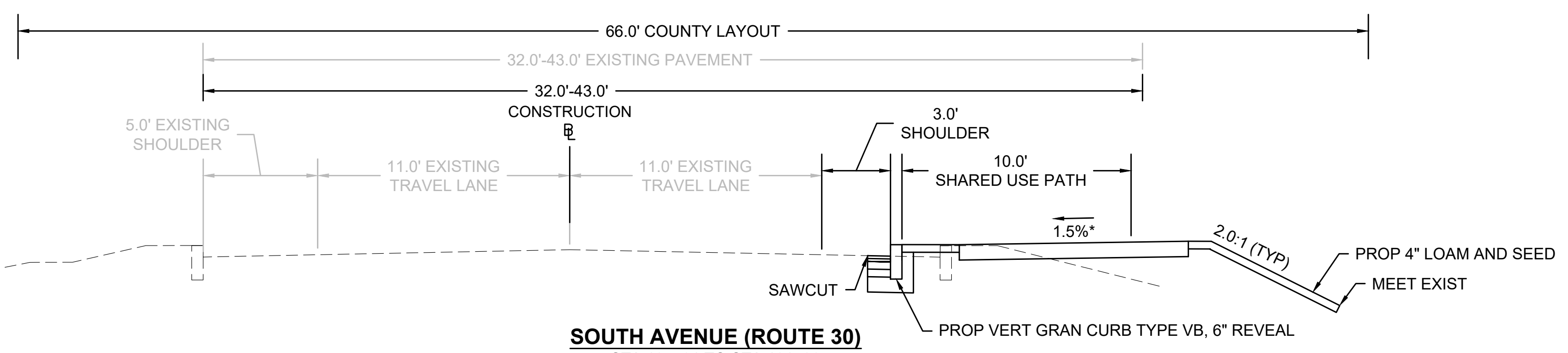
**PAVEMENT NOTES:
 ROUTE 30 (SOUTH AVENUE)**

- PAVEMENT MILL AND OVERLAY:**
- SURFACE COURSE: 1.75" SUPERPAVE SURFACE COURSE 12.5 POLYMER (SSC-12.5-P) OVER ASPHALT EMULSION FOR TACK COAT OVER
 - INTERMEDIATE COURSE: 1.75" SUPERPAVE INTERMEDIATE COURSE 12.5 POLYMER (SIC-12.5-P) OVER ASPHALT EMULSION FOR TACK COAT
 - PAVEMENT MILLING: 3.25" PAVEMENT MICROMILLING
- FULL DEPTH RECONSTRUCTION:**
- SURFACE COURSE: 1.75" SUPERPAVE SURFACE COURSE 12.5 POLYMER (SSC-12.5-P) OVER ASPHALT EMULSION FOR TACK COAT
 - INTERMEDIATE COURSE: 1.75" SUPERPAVE INTERMEDIATE COURSE 12.5 POLYMER (SIC-12.5-P) OVER ASPHALT EMULSION FOR TACK COAT
 - BASE COURSE: 4.5" SUPERPAVE BASE COURSE 37.5 (SBC-37.5) OVER
 - SUB-BASE: 4" DENSE GRADED CRUSHED STONE OVER 8" GRAVEL BORROW TYPE b
- FULL DEPTH CONSTRUCTION LESS THAN 4' WIDE:**
- SURFACE COURSE: 1.75" SUPERPAVE SURFACE COURSE 12.5 POLYMER (SSC-12.5-P) OVER ASPHALT EMULSION FOR TACK COAT
 - INTERMEDIATE COURSE: 1.75" SUPERPAVE INTERMEDIATE COURSE 12.5 POLYMER (SIC-12.5-P) OVER ASPHALT EMULSION FOR TACK COAT
 - BASE COURSE: 6" HES CEMENT CONCRETE BASE OVER
 - SUB-BASE: 8" GRAVEL BORROW TYPE b
- HOT MIX ASPHALT DRIVEWAYS:**
- SURFACE COURSE: 1.5" SUPERPAVE SURFACE COURSE 9.5 (SSC-9.5) OVER
 - INTERMEDIATE COURSE: 2.5" SUPERPAVE INTERMEDIATE COURSE 12.5 (SIC-12.5) OVER
 - SUB-BASE: 8" GRAVEL BORROW TYPE b
- CEMENT CONCRETE RAMPS:**
- SURFACE COURSE: 4" 4000 PSI, 3/8 INCH, 610 CEMENT CONCRETE MASONRY (AIR ENTRAINED) SURFACE COURSE OVER
 - SUB-BASE: 8" GRAVEL BORROW TYPE b
- CONTINUED ON SHEET 9**

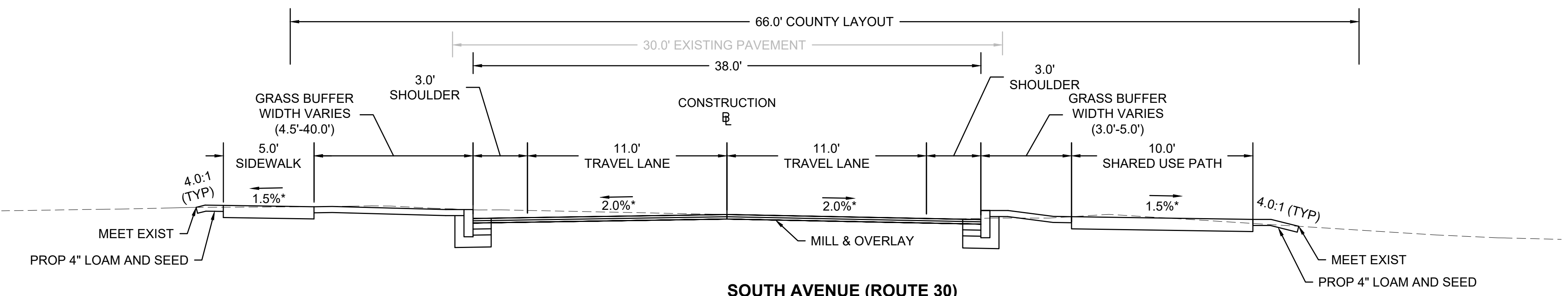
WESTON SOUTH AVENUE (ROUTE 30)			
STATE	FED. AID PROJ. NO.	SHEET NO.	TOTAL SHEETS
MA	-	9	396
PROJECT FILE NO. 608954			
TYPICAL SECTIONS			



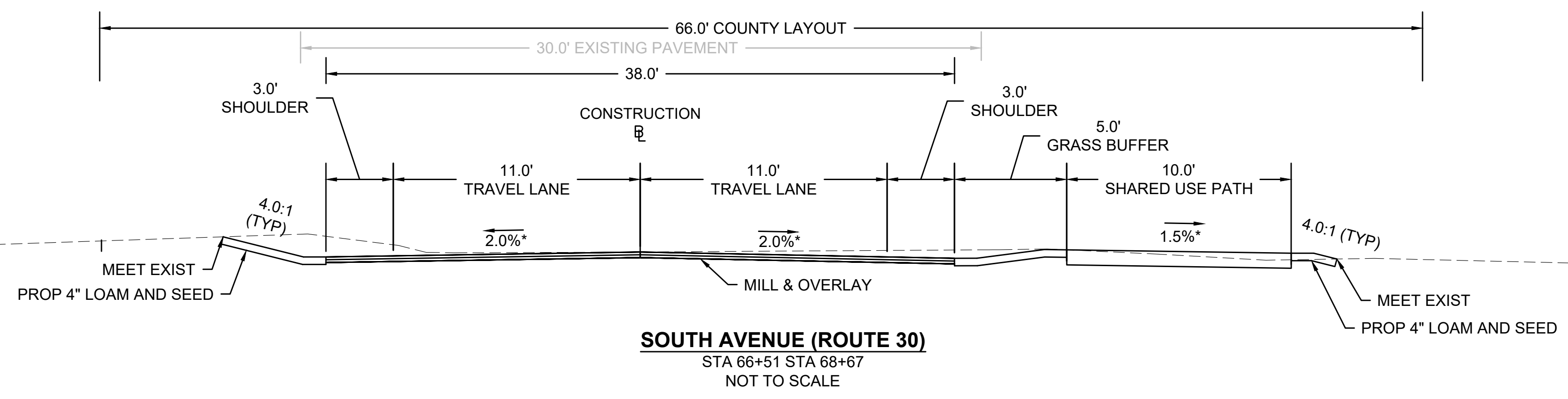
SOUTH AVENUE (ROUTE 30)
STA 101+06 TO STA 109+50
NOT TO SCALE



SOUTH AVENUE (ROUTE 30)
STA 107+91 TO STA 101+06
NOT TO SCALE



SOUTH AVENUE (ROUTE 30)
STA 72+27 TO STA 82+67
NOT TO SCALE



SOUTH AVENUE (ROUTE 30)
STA 66+51 STA 68+67
NOT TO SCALE

**PAVEMENT NOTES:
ROUTE 30 (SOUTH AVENUE)**

CONTINUED ON SHEET 8

HOT MIX ASPHALT WALK SURFACE:

- SURFACE COURSE: 1.25" SUPERPAVE SURFACE COURSE 9.5 (SSC-9.5) OVER
- INTERMEDIATE COURSE: 1.75" SUPERPAVE INTERMEDIATE COURSE 12.5 (SIC-12.5) OVER
- SUB-BASE: 8" GRAVEL BORROW TYPE b

CEMENT CONCRETE MEDIAN AND DRIVES:

- SURFACE COURSE: 6" AIR ENTRAINED 4000, 3/4, 610 CCM CEMENT CONCRETE SURFACE COURSE OVER
- SUB-BASE: 8" GRAVEL BORROW TYPE B

NOTES:

TACK COAT (RS-1H) SHALL BE SPRAY APPLIED DOUBLE OVERLAP FOR UNIFORM COVERAGE AT 0.07 GAL/SY OVER MILLED SURFACE AND CEMENT CONCRETE AND 0.05 GAL/SY OVER SMOOTH SURFACES (BASE AND INTERMEDIATE COURSES) PRIOR TO PAVING OVERLAY.

HMA FOR PATCHING, ASPHALT EMULSION FOR TACK COAT AND HMA JOINT SEALANT SHALL BE APPLIED PER SECTION 450 QUALITY ASSURANCE OF HMA. ASPHALT EMULSION FOR TACK COAT SHALL BE RS-1H TO RESIST TRACKING BY HAUL VEHICLES.

PAVEMENT MILLING SHALL BE USED TO ACHIEVE THE GRADES SHOWN ON THE PLANS OR TO MAINTAIN EXISTING CROSS SLOPE. MILLED SURFACES SHALL NOT BE EXPOSED TO TRAFFIC FOR A PERIOD EXCEEDING 7 DAYS PRIOR TO THE INTERMEDIATE COURSE BEING REPLACED.

THE HOT MIX ASPHALT (HMA) WALKS AND DRIVES MAY BE SUPERPAVE HMA MIXTURES PAVED IN ACCORDANCE WITH SECTION 702 OF THE STANDARD SPECIFICATION WHICH SHALL BE THE BASIS OF THE WORK AND PAID FOR UNDER ITEM 702. HOT MIX ASPHALT WALK SURFACE AND ITEM 703. HOT MIX ASPHALT DRIVEWAY.

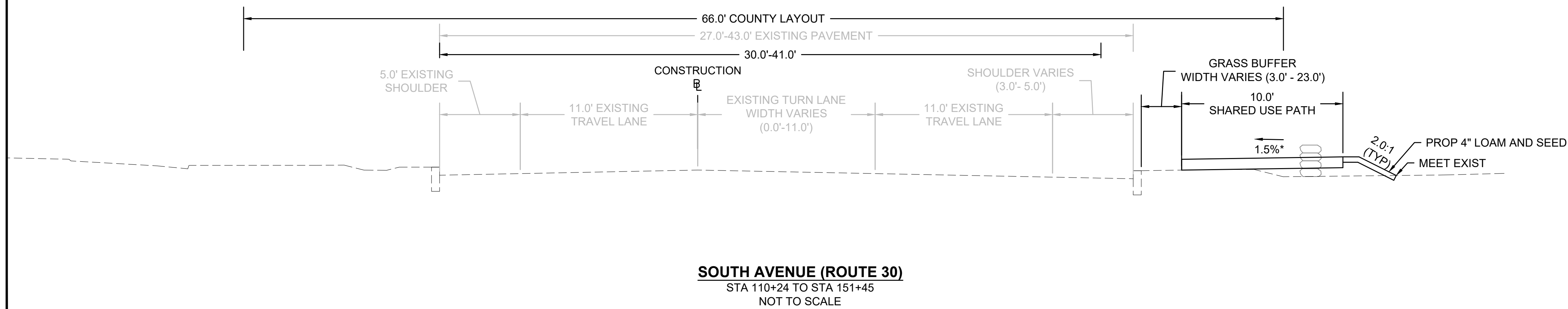
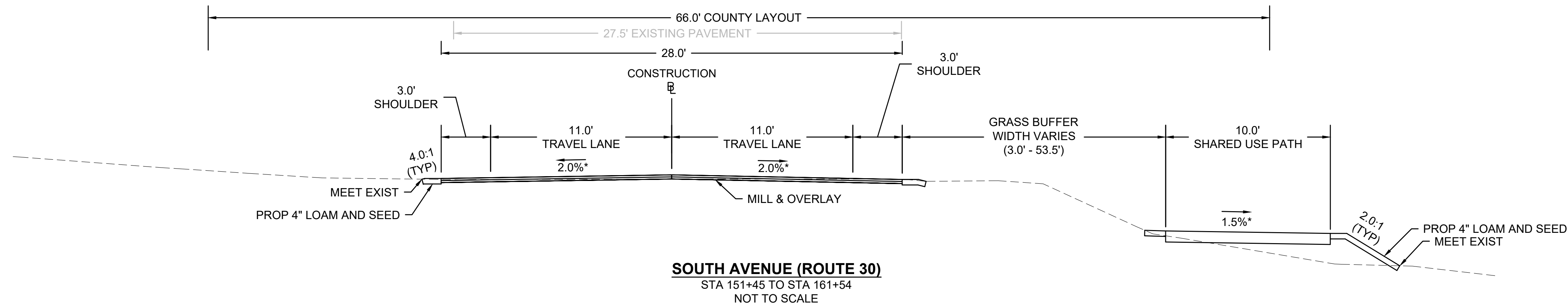
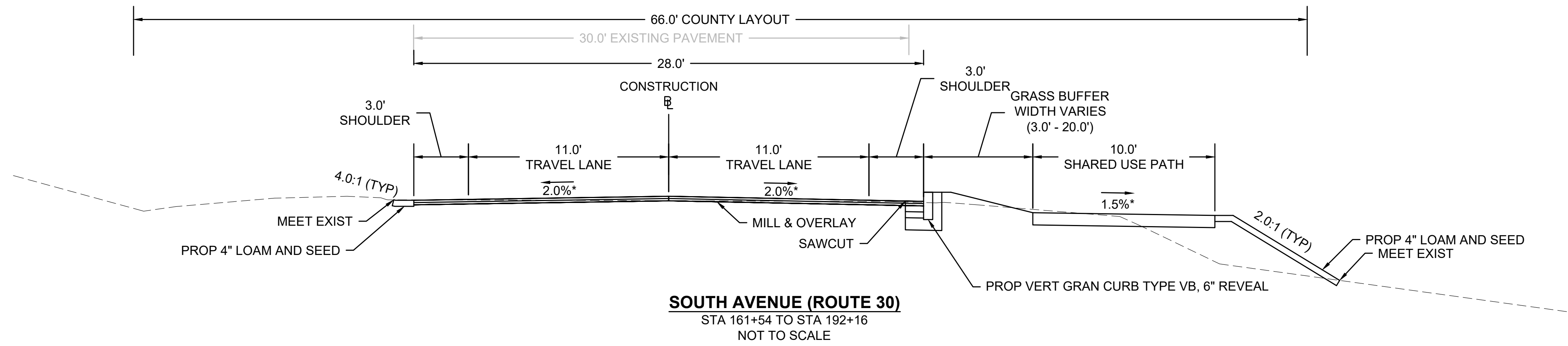
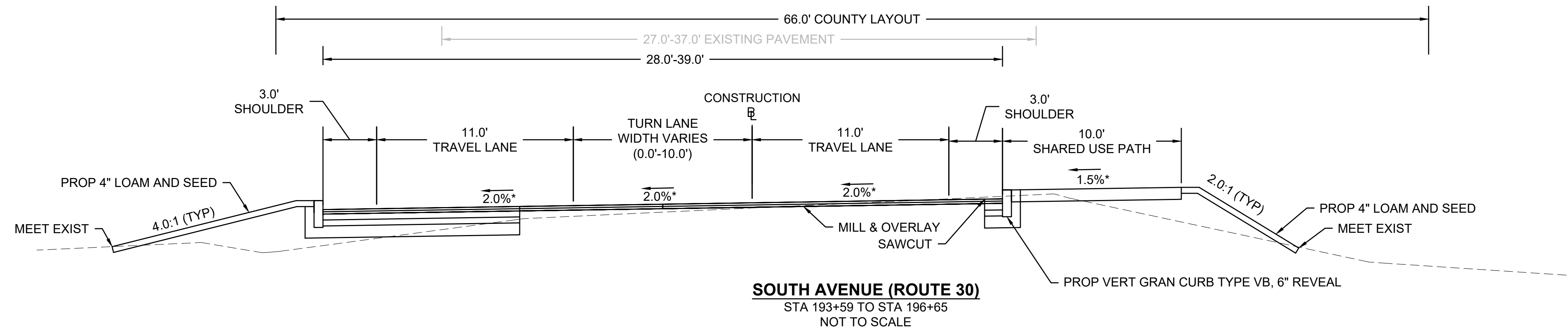
HOT POURED JOINT SEALER SHALL BE USED AS DIRECTED IN SUBSECTION 450.43 AND ALSO SHALL BE USED TO SEAL AROUND THE PROP UTILITY POLE AT STA 201+65 LT AND WHERE DIRECTED.

* = TOLERANCE FOR CONSTRUCTION ± 0.5% ON SIDEWALK SLOPES, DRIVEWAY SLOPES, AND WHEELCHAIR RAMPS.

WESTON
SOUTH AVENUE (ROUTE 30)

STATE	FED. AID PROJ. NO.	SHEET NO.	TOTAL SHEETS
MA	-	10	396
PROJECT FILE NO.		608954	

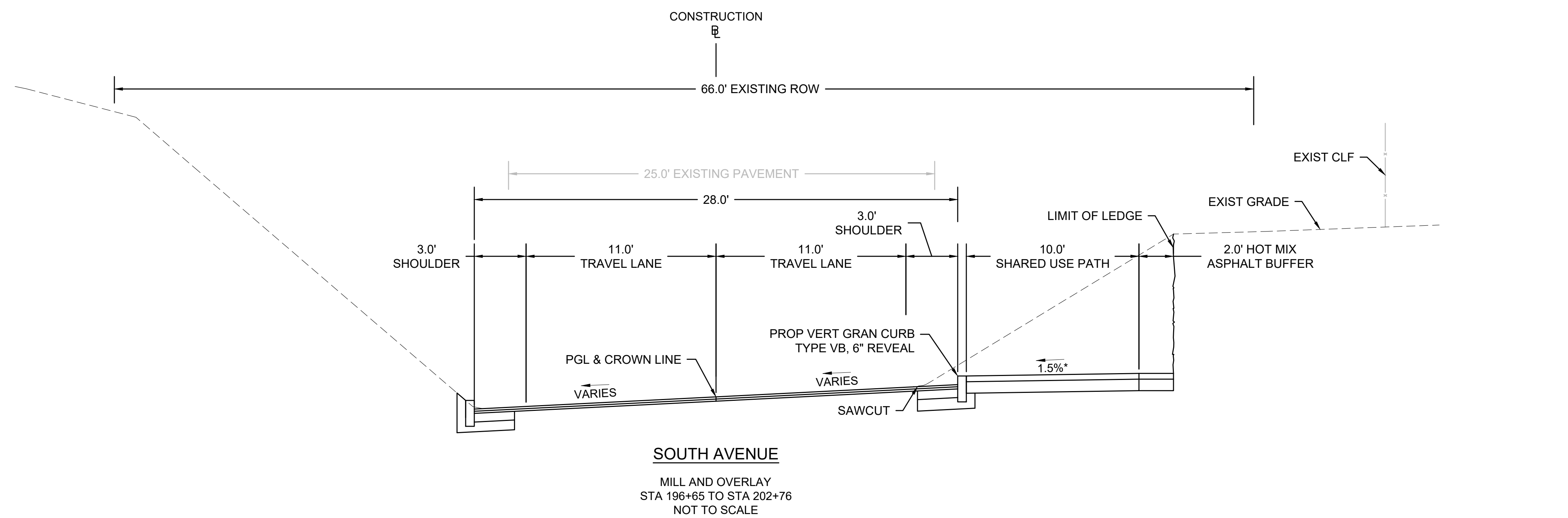
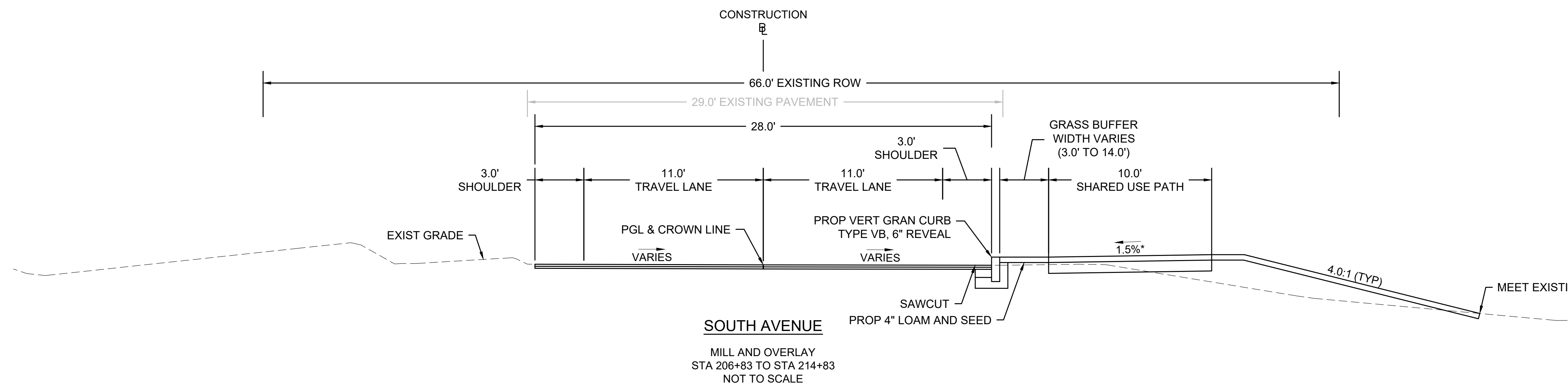
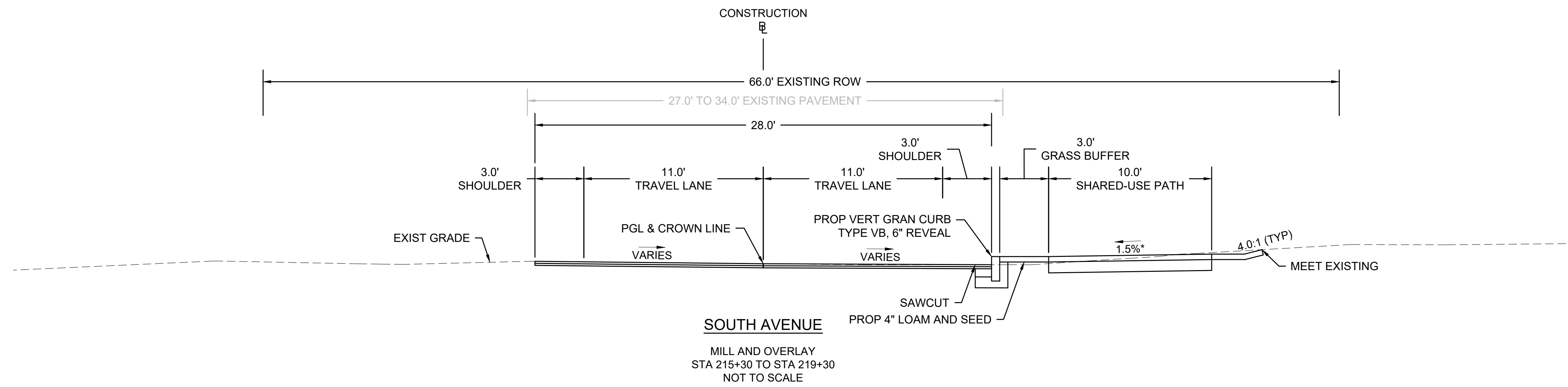
TYPICAL SECTIONS



WESTON
SOUTH AVENUE (ROUTE 30)

STATE	FED. AID PROJ. NO.	SHEET NO.	TOTAL SHEETS
MA	-	11	396
PROJECT FILE NO.		608954	

TYPICAL SECTIONS



WESTON
SOUTH AVENUE (ROUTE 30)

STATE	FED. AID PROJ. NO.	SHEET NO.	TOTAL SHEETS
MA	-	12	396
PROJECT FILE NO.		608954	

TYPICAL SECTIONS

